

Clean Streets LA Comprehensive Clean-Ups

By Matthew Tenchavez,
UHRC Manager



Municipal Code 56.11

- **SUMMARY: Municipal Code Section 56.11 STORAGE OF PERSONAL PROPERTY (MC 56.11)**, which went into effect on July 18, 2015, **regulates storage of property on the City's public right-of-way, including sidewalks, alleys, and streets.** The ordinance's Declaration of Legislative Intent states, in part, that the unauthorized use of public areas for the storage of personal property interferes with the rights of other members of the public to use public areas for their intended purposes and can create a public health or safety hazard that adversely affects residential and commercial areas. **The purpose of this article is to maintain public areas in clean, sanitary and accessible condition.** MC 56.11 applies to any property stored in the public right-of-way and does not make a distinction between individual property and commercial property.
- On August 12, 2015, the Homelessness and Poverty Committee considered proposed amendments to MC 56.11. Amendments include those presented in Motions (Bonin - Price) and (Cedillo - Bonin) as well as verbal proposals made during Committee. The Committee instructed the Office of the Chief Legislative Analyst (CLA) and the City Administrative Officer (CAO) to work with the City Attorney's Office to report relative to the proposed amendments and whether implementation can occur through either adjusting current City department protocols/operations or through an Ordinance amending MC 56.11.
- The CAO/CLA will also transmit a report to Council under separate cover relative to increasing the provision of storage for homeless individuals in the City (CF 15-0727).
- Departments involved with operations relative to MC 56.11 and its enforcement are as follows: **Bureau of Sanitation (Sanitation), Bureau of Street Services (BOSS), City Attorney, Los Angeles Homeless Services Authority (LAHSA), and the Los Angeles Police Department (LAPD).**

Clean Streets LA (Formerly Known as SSIED)

- Clean Streets LA is a government and community partnership lead by LA Sanitation (LASAN) to keep Los Angeles neighborhoods clean. CSLA removes illegal dumping, organizes neighborhood beautification events, and is responsible for “Homeless Encampment clean-ups”.
- **Prior to CSLA, this responsibility belonged to the Bureau of Street Services, Investigation and Enforcement Division.** The acronym of *SSIED* is still commonly used at LAHSA to refer to CSLA clean-ups at homeless encampments.
- Responding to the Mitchell Injunction, which stemmed from a 2016 lawsuit, the City developed a comprehensive set of protocols that provide guidelines on how to enforce MC 56.11 and conduct clean-ups at homeless encampments.



General CSLA “Good Neighbor” Messaging for Homeless Encampments

- Bring your tent down during the day, unless it’s raining.
- Leave enough space for people to get by on the sidewalk – at least 3 feet, or enough for a wheelchair to get through.
- Don’t tie your tent to buildings, fences, trees, etc.
- Never block doors or driveways.
- Try to bag up your trash. We can provide bags!
- Leave full trash bags inside or near trash bins.
- Be discreet with drug use, don’t leave sharps out.



Council Districts within Service Planning Areas

Council Districts

- CD 1: SPA 4
- CD 2: SPA 2
- CD 3: SPA 2
- CD 4: SPA 2 & SPA 4
- CD 5: SPA 2 & SPA 5
- CD 6: SPA 2
- CD 7: SPA 2
- CD 8: SPA 6
- CD 9: SPA 6
- CD 10: SPA 4 & 6
- CD 11: SPA 5
- CD 12: SPA 2
- CD 13: SPA 4
- CD 14: SPA 4
- CD 15: SPA 5



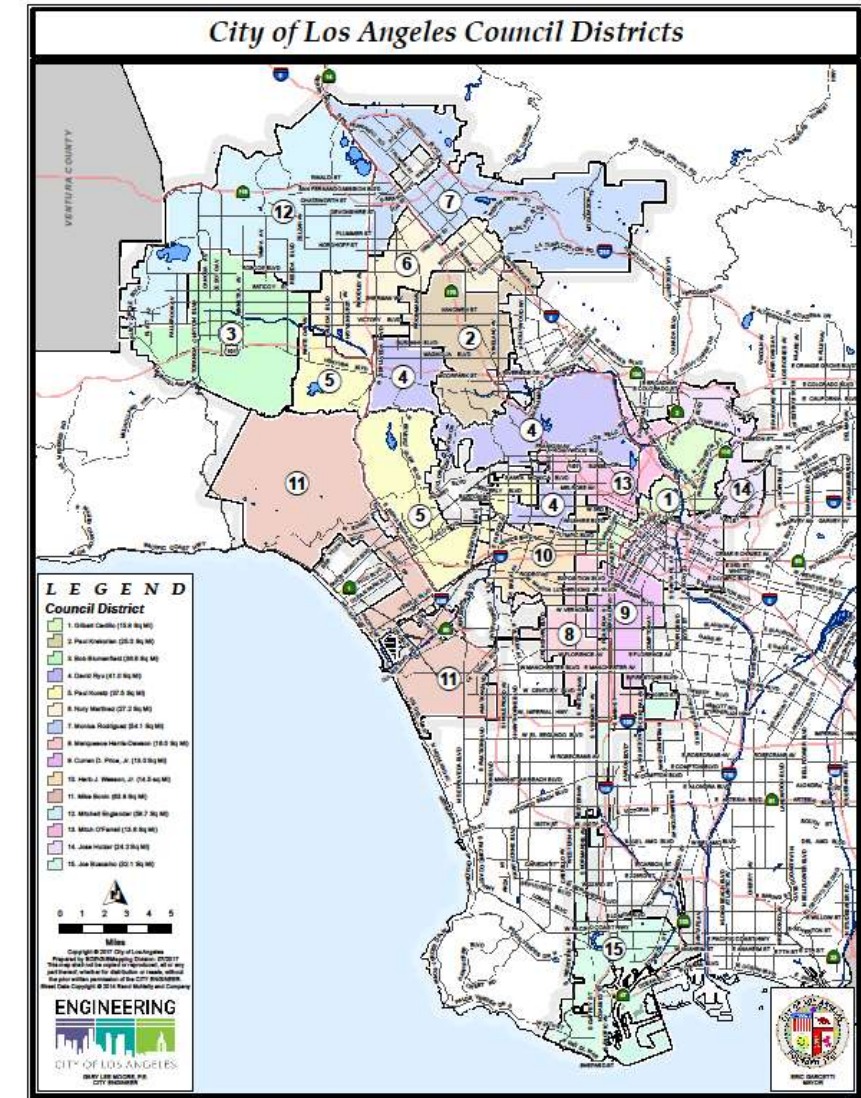
Priority Locations from Community Services Group

- Council Districts reach out to the Community Services Group (LASAN employees) to give priorities for scheduled CSLA clean ups. →
- In order for a homeless encampment to get authorized for a clean up, the Board of Public Works, Watershed Protection, and LAHSA must all sign off.
- HET will be assigned priorities sites from LAHSA management team. Please be on the lookout for the **due date** on the email chain. We need to have outreach completed before the due date assigned by the CSG's.

14	LAPD	LAPD	15	LAPD	LAPD	16	LAPD	LAPD	17	LAPD	LAPD
CD13 HE	RAMP	HOLLY	CD14 HE	NEWT	CENT	CD1 HE	NOE	RAMP	CD9 HE	NEWT	SW
CD6 HE	VALLEY HOPE	VALLEY HOPE	CD8 HE	77TH	SW	CD3 HE	VALLEY HOPE	VALLEY HOPE	CD13 HE	RAMP	OLYM
CD5 HE	PAC	WLA	CD15 HE	HARB	SE	CD10 HE	OLYM	WLA	CD2 HE	VALLEY HOPE	VALLEY HOPE
						CD9 HE	NEWT	77TH	CD8 HE	77TH	SE
						CD9 EN	NEWT		CD9 EN	NEWT	
21	LAPD	LAPD	22	LAPD	LAPD	23	LAPD	LAPD	24	LAPD	LAPD
MILK DAY			CD1 HE	OLYM	RAMP	CD13 HE	HOLLY	OLYM	CD4 HE	NOE	VAN NUYS
			CD9 HE	NEWT	SE	CD6 HE	VALLEY HOPE	VALLEY HOPE	CD15 HE	SE	HARB
			CD7 HE	VALLEY HOPE	VALLEY HOPE	CD11 HE	WLA	PAC	CD14 HE	CENT	NEWT
			CD9 EN	NEWT		CD9 EN	NEWT				
28	LAPD	LAPD	29	LAPD	LAPD	30	LAPD	LAPD	31	LAPD	LAPD
	Number	Address	Cross Street		LAPD Division						
1	181126012	4TH ST AT SHATTO PL, 90020	SHATTO PL		OLYMPIC						
2	180914001	186 S VERMONT AVE, 90004	W 2ND ST		OLYMPIC						
3	181206015	425 N ALVARADO ST, 90026	TEMPLE ST/101 FWY		RAMPART						
4	181005012	124 N PARK VIEW ST, 90026	BEVERLY BLVD/COUNCIL ST		RAMPART						
5	181005012	1626 W ROCKWOOD ST, 90026	BELMONT AVE/ UNION AVE		RAMPART						

Outreach for CSLA Clean-Ups

- The main distinguishing factor between CSLA (SSIED) outreach, and normal proactive outreach, is the messaging we provide when conducting outreach.
- When engaging with individuals at CSLA locations, teams should be clear and upfront about the fact that the location has been identified for a possible CSLA clean-up.
- If we have a scheduled clean-up date, we should inform everyone at the location of the anticipated clean-up date.
- It is also critical that we provide accurate information about what individuals can expect during the clean-up, and how they can prepare to minimize negative impacts on that day.



15 Council Districts within the City of Los Angeles

LAHSA Notice

- Along with verbally informing those living at the encampment, HET staff are expected to post the LAHSA flyer for CSLA comprehensive homeless encampment clean-ups.
- The flyer will have the Referral and Resources phone number.
- HET are also expected to leave their business cards attached to the flyer so that those living in the encampment have a direct contact to outreach staff.
- Give yourself enough time to return and try again if you don't make contact on your first attempt!



ATTENTION!

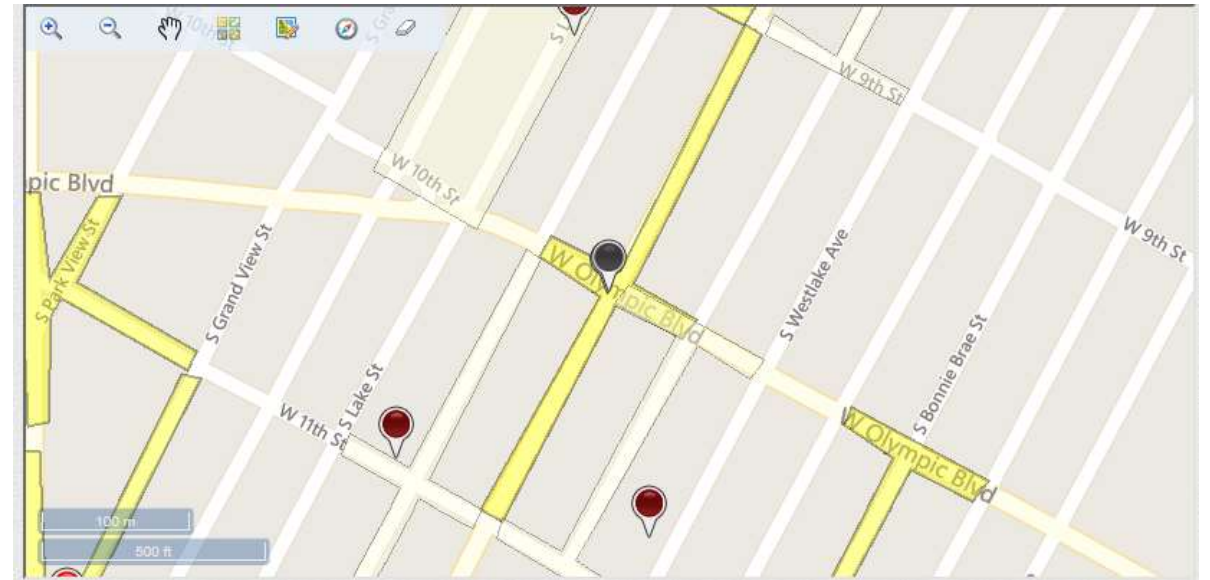
This location has been identified for a possible future Clean Streets LA (CSLA) comprehensive homeless encampment clean-up.

Once the clean-up is scheduled, the Bureau of Sanitation (LASAN) will post an official confirmation, including the exact date of the clean-up. They will provide you with 24-72 hours' notice.

We want to help! If you need emergency shelter, service referrals or information, please contact the Homeless Engagement Team Member whose business card is attached to this flyer. You can also call our information line at 213-225-6581.

Authorization Sites.

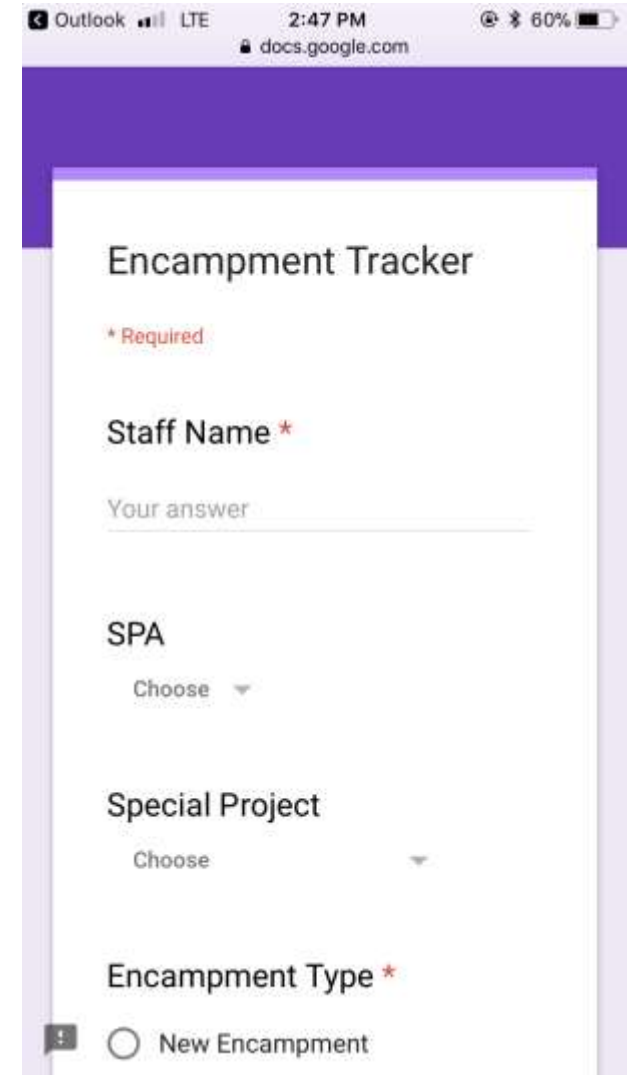
Polygons listed in the photo on the right show where the CSLA will take place the day of the clean up. The address provided with each authorization site will have a polygon.



The photo on the left is the “anchor” photo determined by LASAN which will show the belongings from the homeless encampment. HET staff need to ensure that outreach is being conducted at the listed address. If you don’t see signs of an encampment nearby, contact your supervisor to verify if the encampment is hidden or in a difficult to reach location like behind a gate.

Encampment Tracker

- Please continue to enter sites in the encampment tracker with the listed authorization number along with a follow-up email once all assign CSLA are completed.
- It's important to note the listed information in the tracker like Dwelling Types and Numbers as well as the addresses/cross streets.
- Please reach out to your supervisors if you don't have the encampment tracker on your mobile device



The screenshot shows a mobile app interface for the 'Encampment Tracker'. At the top, the status bar displays 'Outlook', 'LTE', '2:47 PM', and '60%' battery. Below the status bar, the app title 'Encampment Tracker' is visible. A red asterisk indicates a required field. The form includes a 'Staff Name' field with a red asterisk, a 'Your answer' input field, a 'SPA' dropdown menu with a 'Choose' option, a 'Special Project' dropdown menu with a 'Choose' option, and an 'Encampment Type' field with a red asterisk. At the bottom, there is a radio button labeled 'New Encampment'.

Questions?

- Reach out to your direct Supervisor for additional information on the CSLA clean-up location.
- If needed, they can always reach out to me at the UHRC for clarifications, coordination and other assistance.

Matthew Tenchavez

UHRC Manager

Cell: 213-503-8081

Email: mtenchavez@lahsa.org

www.lahsa.org

*Thank
you!*